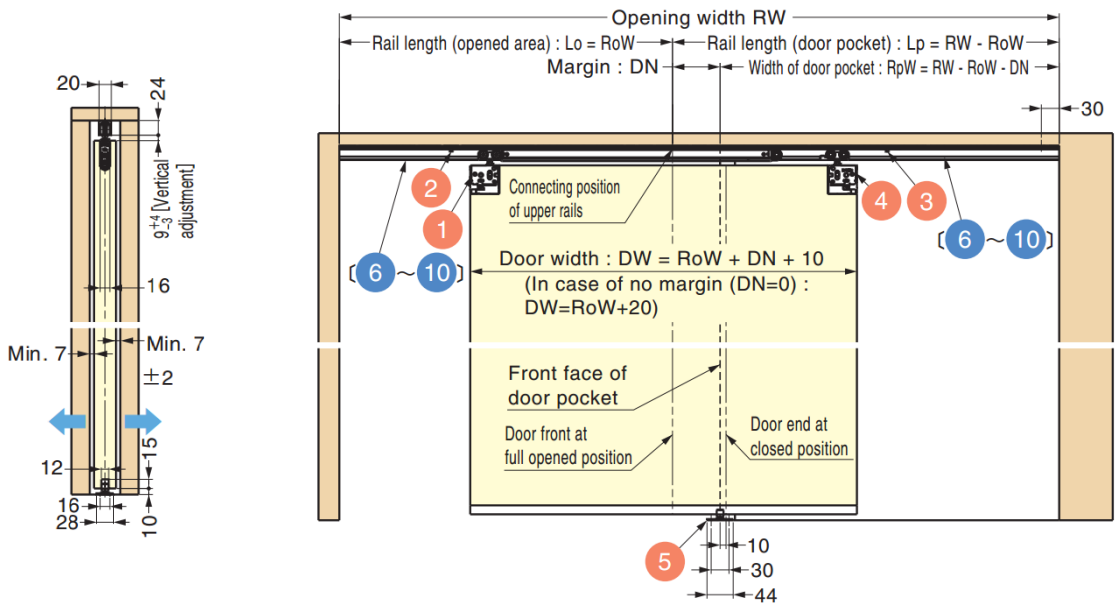
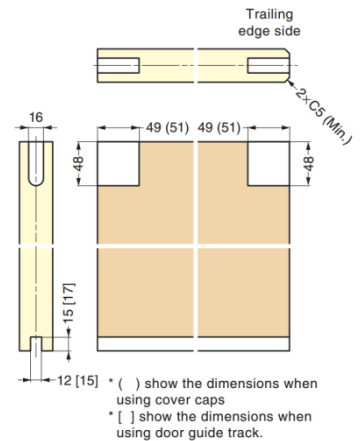
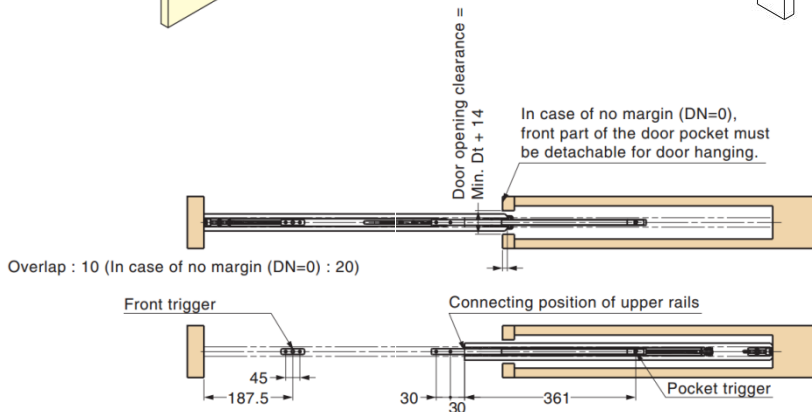
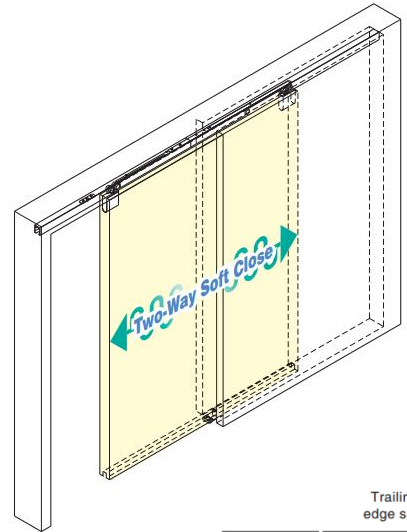
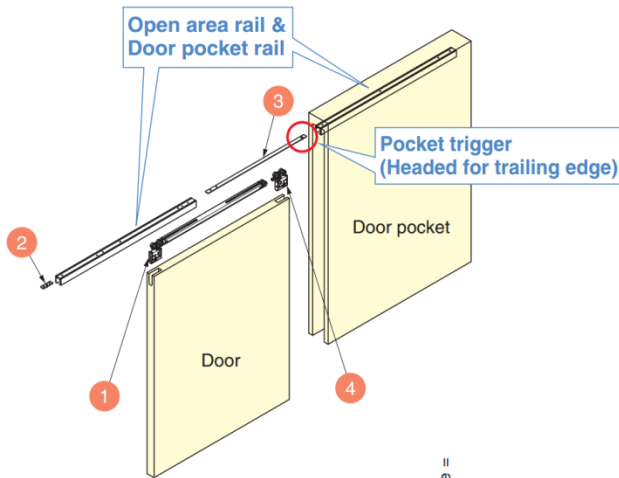


## GFD35EV-PD Pocket Door System

### Features

- For pocket door with two-way soft close
- Separated upper rail allows easy maintenance after door installation in pocket door application
- Thin profile allows flexible design on various applications.
- Designed for interior use, not for exterior

Door Weight	Max. 35 kg
Door Thickness	Min. 30 mm
Door Width	590 - 1200 mm
Door Height	Max. 2400 mm
Specification	Single Door Use



## Parts Set (Per Door)

## Necessary Parts

Part No.	Description
GFD35EVDHCP-PD	Recessed Roller Two-Way Soft Close

### Parts Included

No.	Qty	Part Name	Dimensions	Description
1	1 pc	Recessed Roller Two-way Soft Close		<b>GFD35EV-WRH-DSC</b> ● Material Zinc Alloy (ZDC) / Polyacetal (POM) ● Finish Coloured Zinc Chromate / Grey ● Screw Pan Head Tapping Screw 3.8×40
2	1 pc	Front Trigger		<b>GFD35EV-TRGPF</b> ● Material Steel ● Finish Black Chromate ● Screw Countersunk Head Tapping Screw 4×30
3	1 pc	Pocket Trigger		<b>GFD35EV-TRGPB</b> ● Material Steel ● Finish Black Chromate ● Screw Countersunk Head Tapping Screw 4×30
4	1 pc	Recessed Roller		<b>GFD35EV-WRH-N</b> ● Material Zinc Alloy (ZDC) / Polyacetal (POM) ● Finish Coloured Zinc Chromate / Grey ● Screw Pan Head Tapping Screw 3.8×40
5	1 pc	Floor Guide		<b>GFD50-BGR18</b> ● Material Stainless Steel (SUS430) / Polyacetal ● Finish Plain ● Screw Countersunk Head Tapping Screw 4×20

## Upper Track

## Necessary Parts

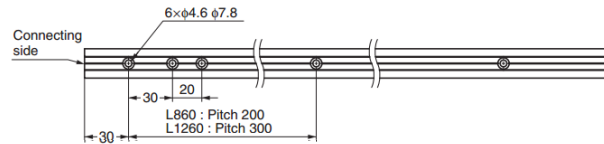
No.	Length	Part No.	Part Name	Dimensions	Description
6	860 mm	GFD30-35EV-TRMP860-SL			● Material Aluminium Alloy ● Finish Anodized Silver ● Screw Countersunk Head Tapping Screw 3.5×25
7	1260 mm	GFD30-35EV-TRMP1260-SL			
8	1860 mm	GFD30-35EV-TRMP1860-SL			
9	2760 mm	GFD30-35EV-TRMP2760-SL			
10	3960 mm	GFD30-35EV-TRMP3960-SL			

## Optional Parts

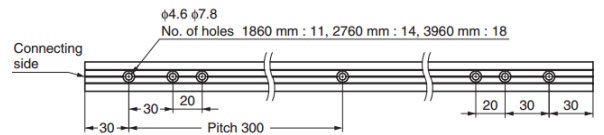
No.	Item Code	Part Name	Dimensions	Description
11	GFD50-WRH-CP-WT	Cover Cap		● Material Polypropylene ● Finish WT=White LBR=Light Brown DBR=Dark Brown
	GFD50-WRH-CP-LBR			
	GFD50-WRH-CP-DBR			
12	GFD30-HBRT1000SIL	Door Guide Track		● Material Aluminium ● Finish Anodized Silver

### Hole Dimensions of Upper Track

● In case of 860 mm & 1260 mm

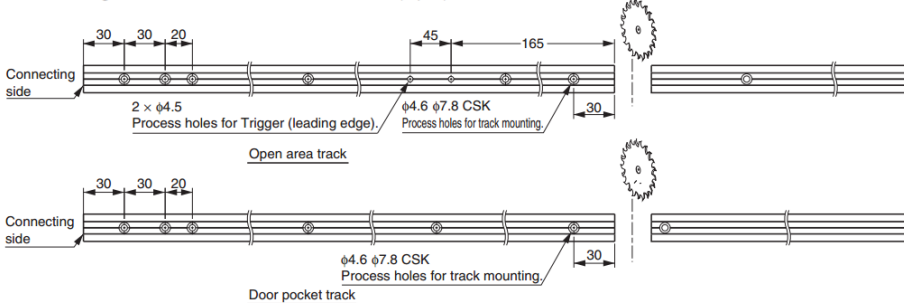


● In case of 1860 mm, 2760 mm & 3960 mm



### Cutting Track and Hole Processing

● When using 860 mm track and/or 1260 mm track (2 pcs)



● When cutting from a long track (1860 mm, 2760 mm, 3960 mm)

